

# Equaline Mini

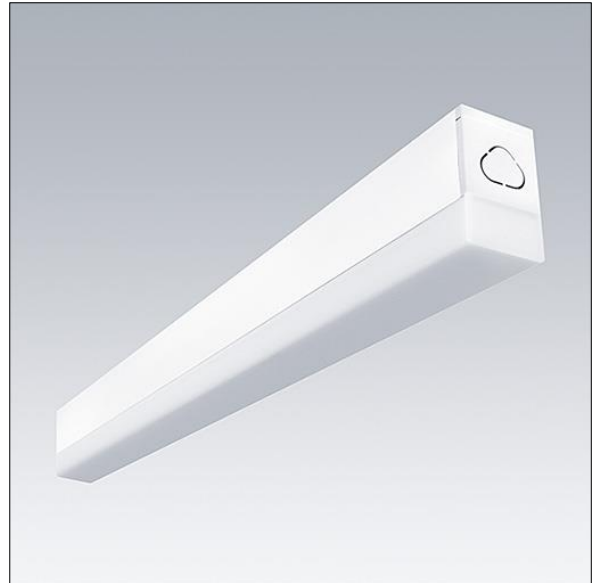
22660772 EQUAMINI L580 LED950-830 C

THORN

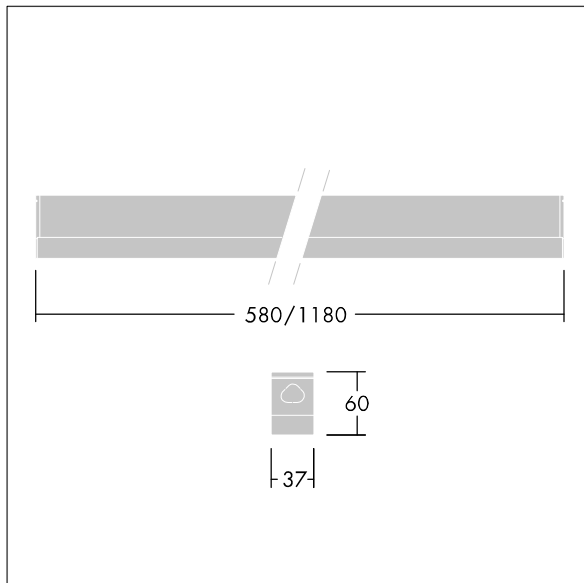
## Equaline Mini

A slim Surface mounted LED batten luminaire. Electronic, fixed output control gear. Class I electrical. IP20, IK06. Body: extruded aluminium anodised finish. Diffuser: opal polycarbonate plastic. End-cap: Dual-colour injected polycarbonate plastic. Electrical connection via flap in rear of body. Continuous linking possible. Complete with 3000K LED

Dimensions: 580 x 37 x 60 mm  
Luminaire input power: 9.2 W  
Luminaire luminous flux: 1053 lm  
Luminaire efficacy: 114 lm/W  
Weight: 0.53 kg



TLG\_EQUM\_F\_ST.jpg



TLG\_EQUM\_M\_LD1.wmf

All values marked with an \* are rated values. Thorn uses tried and tested components from leading suppliers, however there may be isolated instances of technology-related failures of individual LEDs during the rated product lifetime. International standards set the tolerance in initial flux and connected load at  $\pm 10\%$ . Unless stated otherwise, the values apply to an ambient temperature of 25°C.

Thorn Lighting is constantly developing and improving its products. The right is reserved to change specifications without prior notification or public announcement.  
© Thorn Lighting