

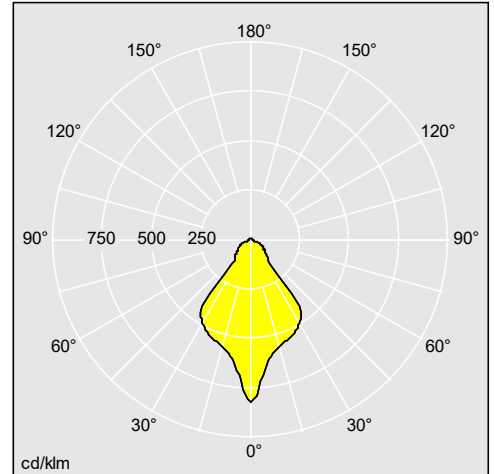
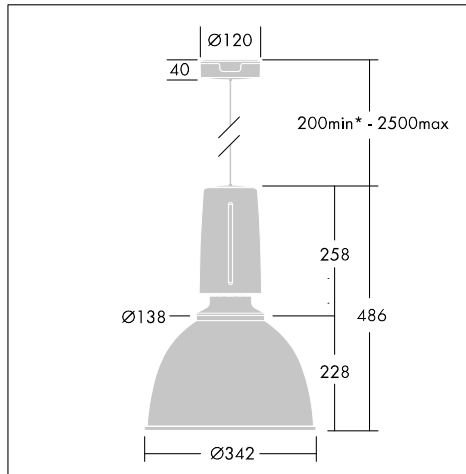
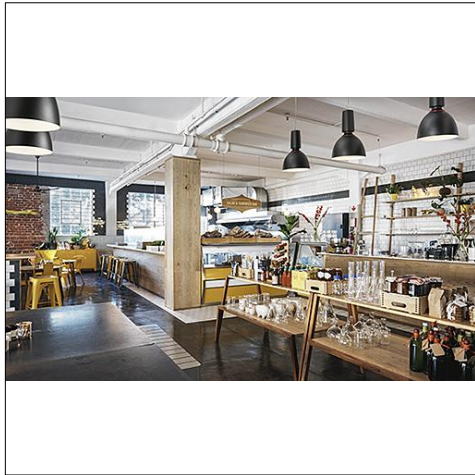
## Glacier II

### Modern and efficient decorative LED pendant luminaire with high lumen packages

- High performance (91-124lm/W) decorative luminaire offers an efficient alternative to traditional HID (up to 150W) pendants
- Available in two sizes and two colours
- A choice of 4 reflectors to fit a wide range of applications
- Ceiling rose in same design to complete the look
- Contus trunking compatibility through optional adapter accessory



Photographs, line drawings and photometric data are representative only. For specific product detail please select an individual product.



96629696

### Material/Finish

Housing: die-cast aluminium with satin grey/black finish

Reflector: polycarbonate prismatic, glass prismatic, opal glass or grey/black spun aluminium

Suspension wire: braided steel

Ceiling rose (to be ordered separately): die-cast aluminium with satin grey/black finish and white plastic

Contus adapter (to be ordered separately): pre-coated roll form steel, white (similar to RAL9016)

### Installation/Mounting

Suspension: adjustable quick-lock 2.5m single wire suspension (supplied). Similar length of pre-installed braided flame retardant silicon cable 5x0.75mm<sup>2</sup> (6x0.75mm<sup>2</sup> for E3). Ceiling rose option (ordered separately) 2x5x2.5mm<sup>2</sup> terminal block.

Contus trunking: using the Contus adapter accessory (ordered separately).